

Lower Cache Creek Invasive Species Mapping and Prioritization Project

Cache Creek Conservancy

Nancy Ullrey, Executive Director

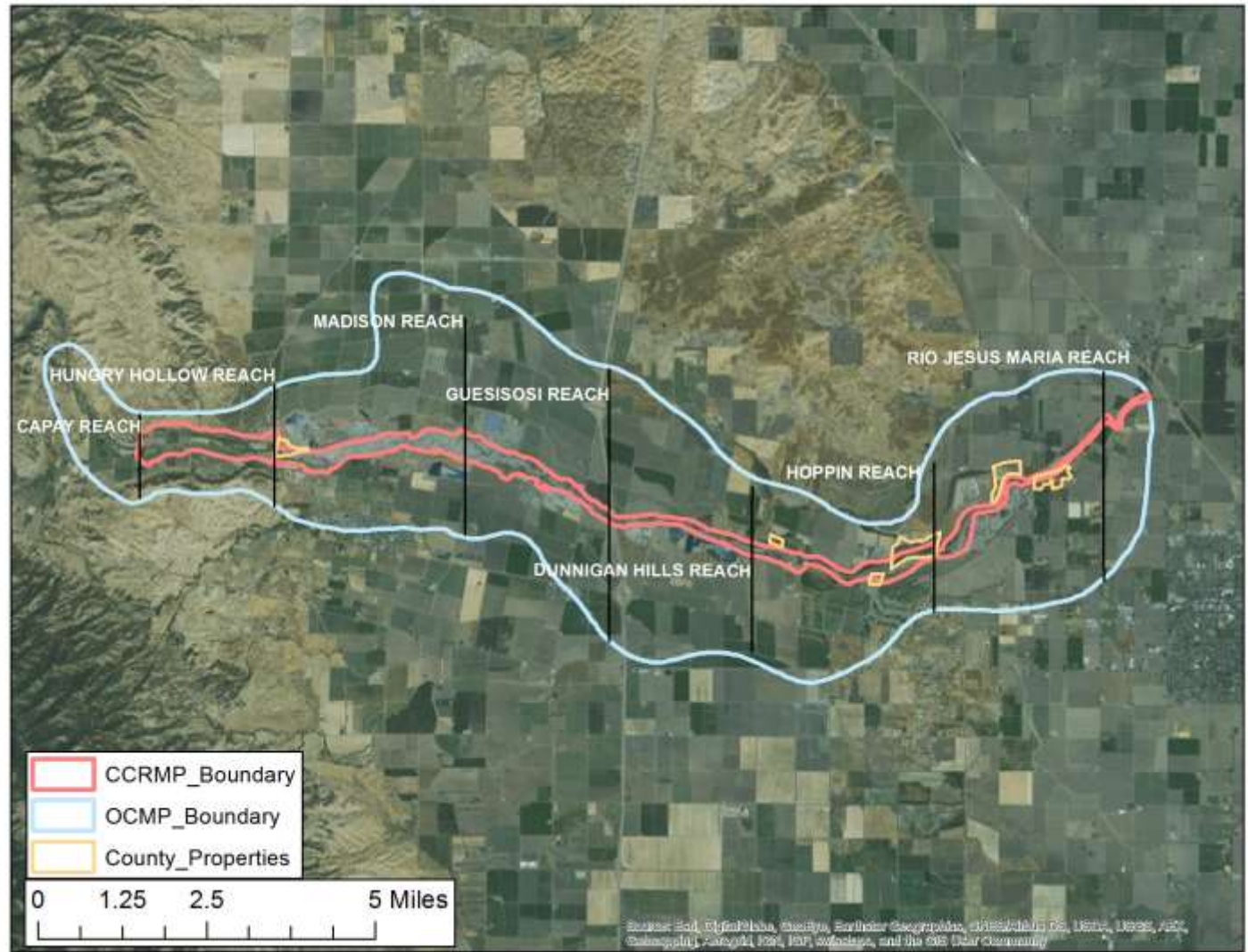
James Mizoguchi, Habitat Restoration Manager

Conservancy's mission: to support Cache Creek watershed preservation, restoration, and enhancement.

- Founded in 1996 as result of “gravel wars.”
- Implements projects to support goals and objectives of:
 - Cache Creek Area Plan
 - Cache Creek Restoration Management Plan
 - Westside Integrated Water Management Plan
 - Technical Advisory Committee annual reports

Survey Area

- 14.5 miles of lower Cache Creek
- 6 additional County Properties:
 - Capay Open Space Park
 - Millsap
 - Wild Wings
 - Cache Creek Nature Preserve
 - Woodland Rief
 - Correll Rodgers



10 Year Creek Spray Program



Adaptive Management Opportunities

- Tamarisk, Arundo, Ravenna grass considered managed although still of concern
- Successful program presented opportunities for restoration as well as creating invasion space other nonnative species

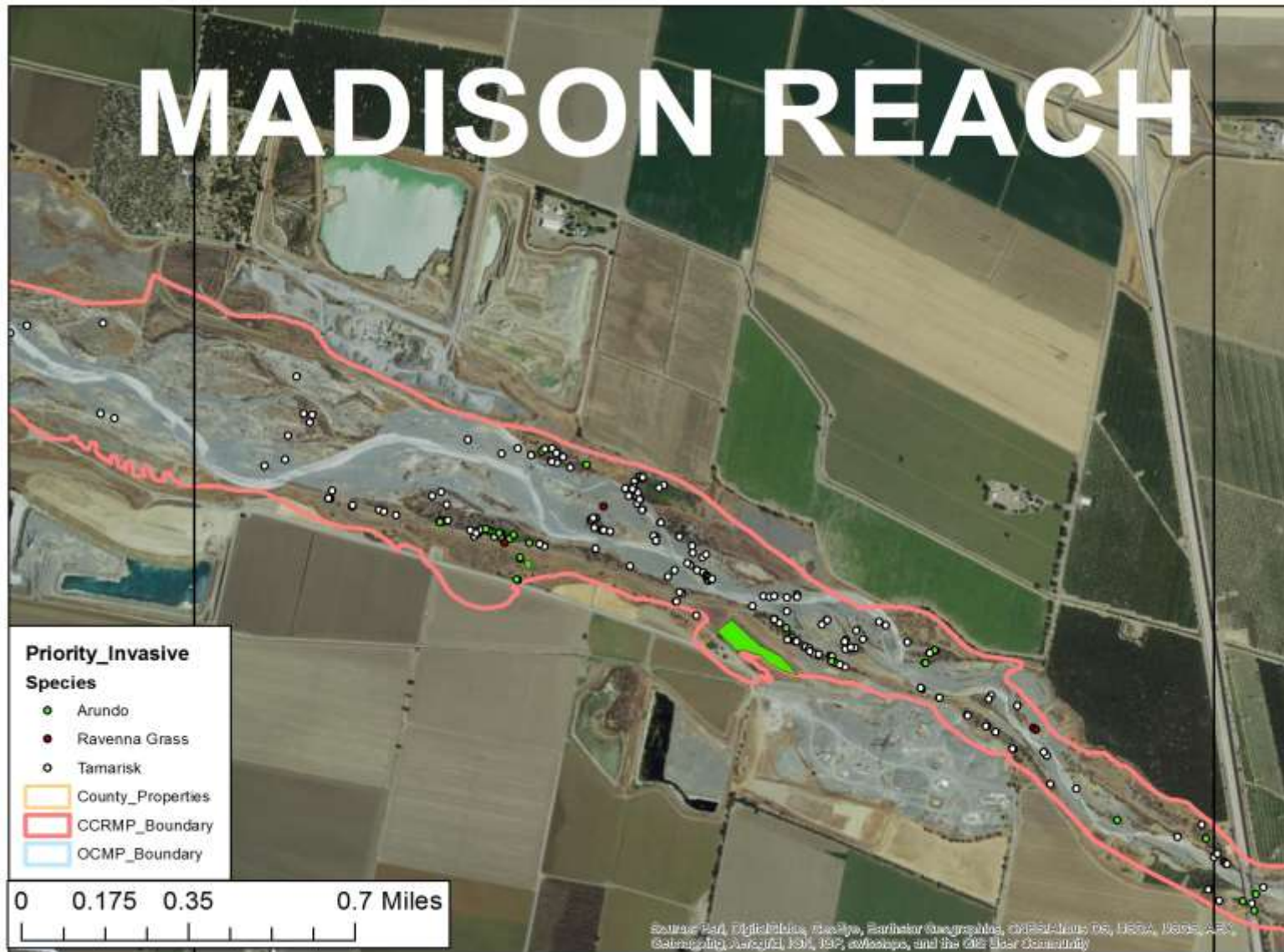


Image of perennial pepperweed from bcinvasives.ca accessed 1-10-2017

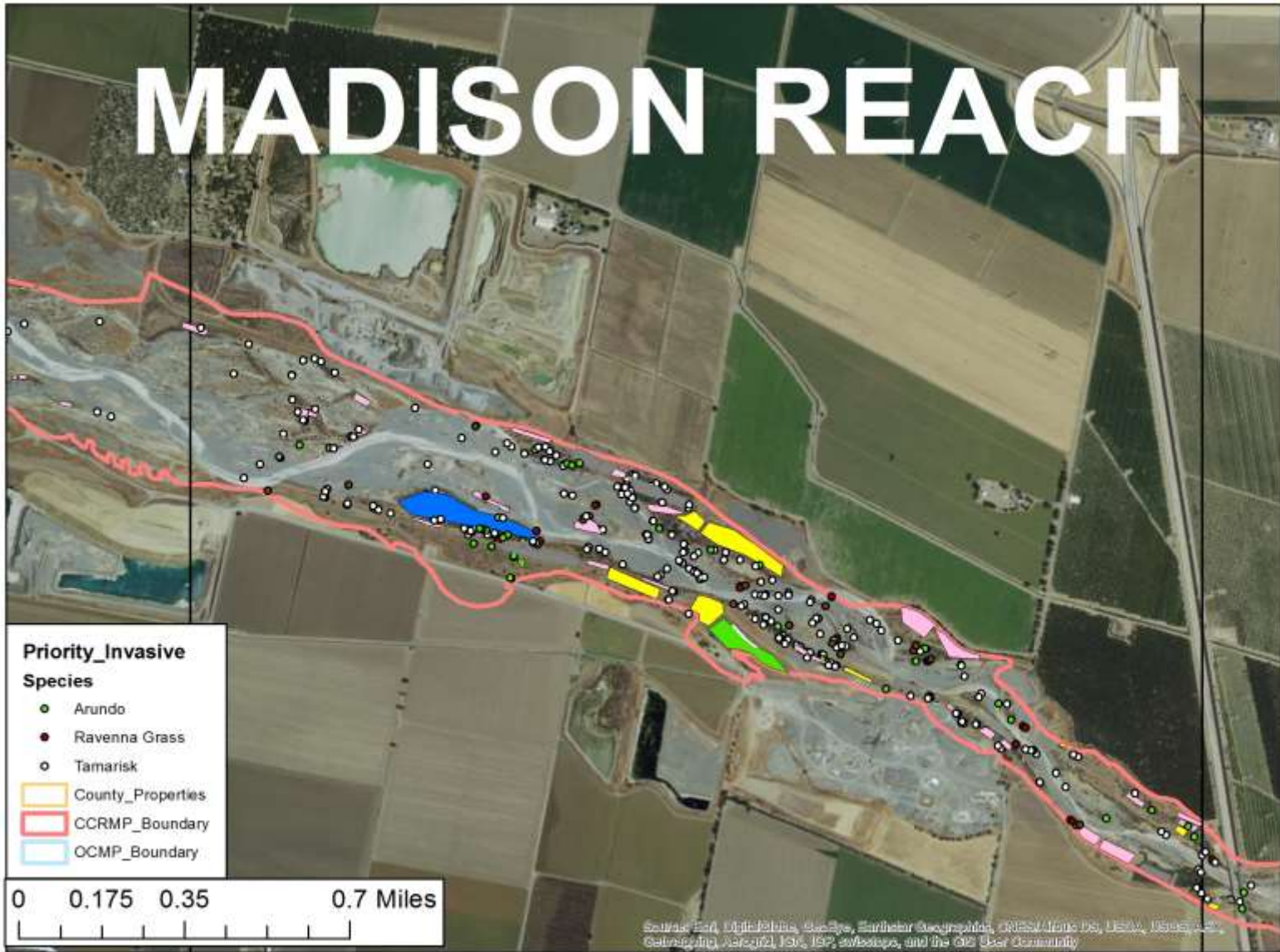
Goals of Project

- Map extent & distribution of existing priority invasive species
- Map extent & distribution of *new* priority invasive species
- Produce a GIS baseline map of these distributions for adaptive management
- Identify & prioritize best areas for riparian restoration

MADISON REACH



MADISON REACH



Recommendations & Next Steps

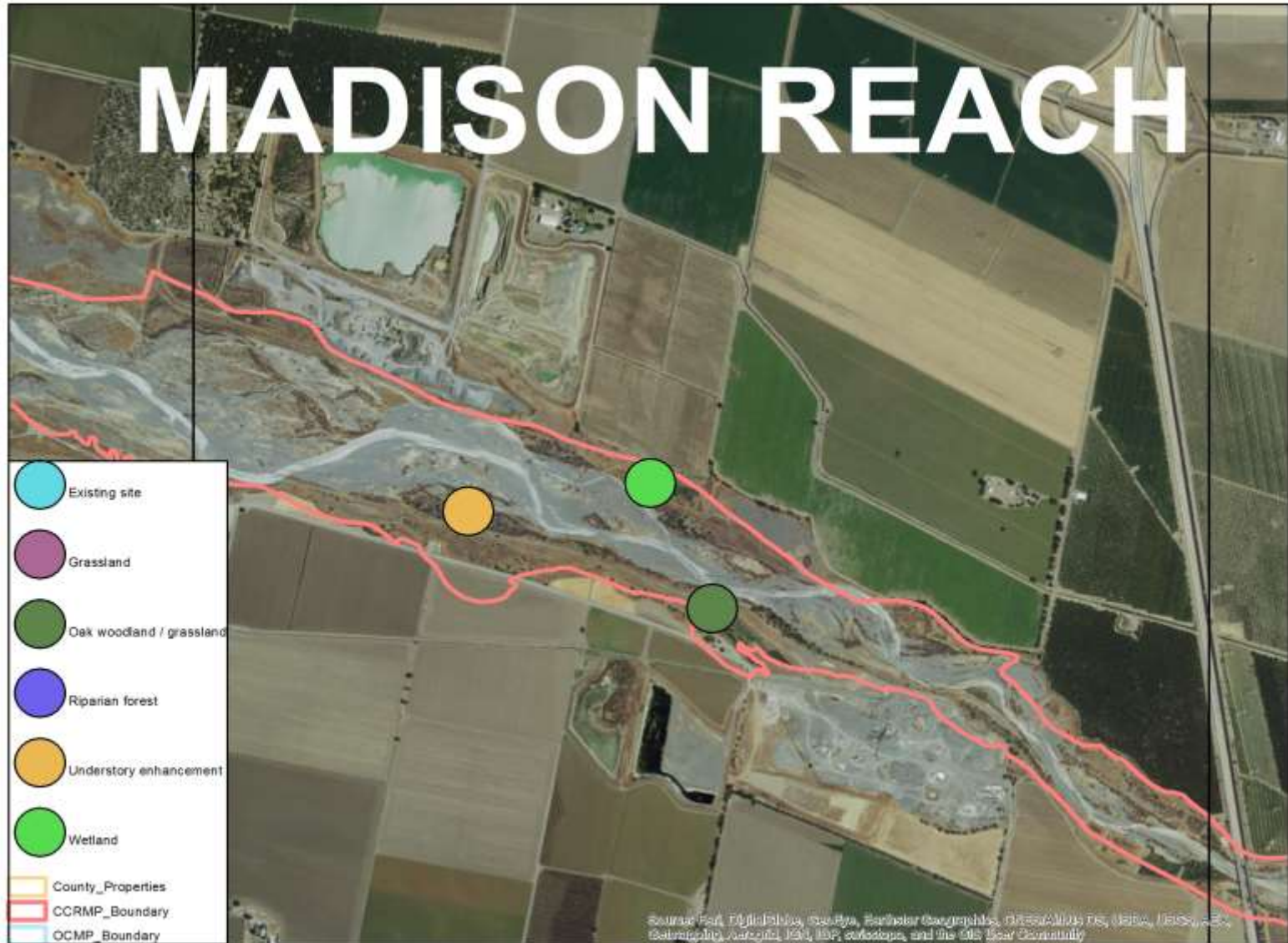
- Formally expand list of priority invasives on lower Cache Creek to include new species and create second and third tier priority species
- Expand Creek Spray to include these other species based on priority and abundance, as well as other factors
- Initiate similar mapping on upper Cache Creek
- Remove debris after invasive species treatment
- Develop more detailed restoration assessments at identified sites
- Repeat this mapping effort every 5 years

Next Steps

- \$1 million grant with UCD submitted to measure, assess and delineate potential revegetation areas for subsurface saturation versus subsoil moisture within two general fluvial landforms
- Seeking grants to continuing mapping on upper Cache Creek



MADISON REACH





Thank You Westside IRWMP Coordinating Committee for supporting our efforts to restore the lower Cache Creek